

Toasters

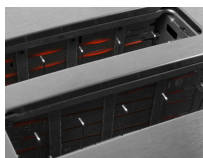
# SA-CT2002I



## Highligths

- Variable Temperature Settings
- Centering system
- High rise lift
- Backlit buttons
- Defrost
- Reheat

**SHARP**  
Be Original.



**SHARP**  
Be Original.

## Key Features

Colour	Stainless steel
Warranty (years)	2 years parts and labour
Controls	Dial and buttons
Temperature settings	7
Defrost	Yes
Reheat	Yes
Crumb tray	Yes

## Dimensions and Weight

Type	Wide slots
Height	22.6
Width	23
Depth	33.3
Product Weight Boxed	1.8 kg
Product Weight Unboxed (net)(kg)	2.2 kg

## Power, Consumption, & Voltage

Voltage / Frequency (V) / (Hz)	220-240 / 50
Power rating (W)	850 W