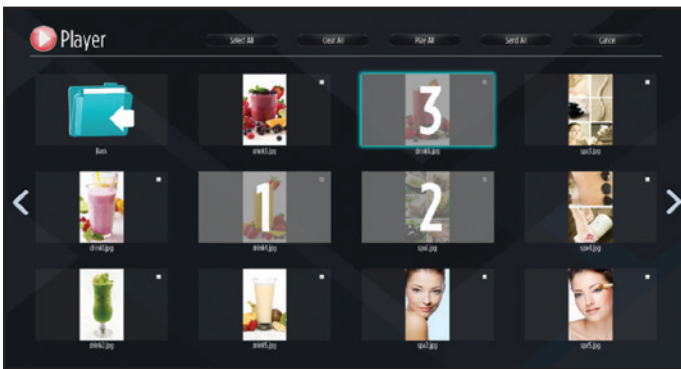


VESTEL VsignLite

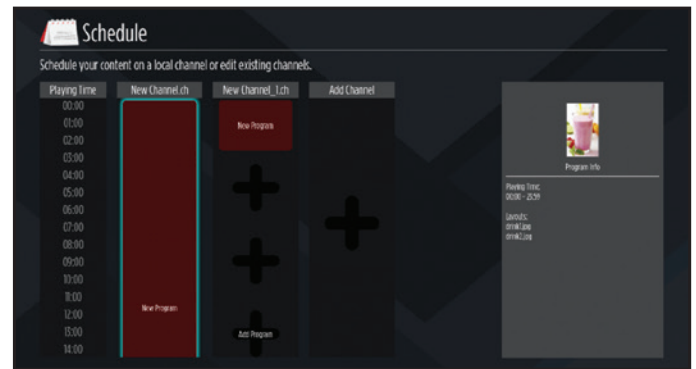
Local Content Management Software

Vestel's VSignLite is a local CMS solution which is embedded to Extreme+, Prime+, and Entry+ digital signage series displays. It includes four main components - Player, Schedule, Template, and Editor.



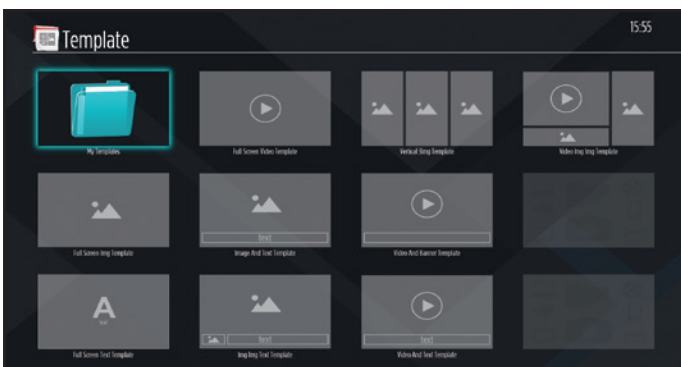
Player

Media files can be played separately, or they can be selected in a specific order and played in sequence. Also, created channels in Schedule section can be displayed on the device.



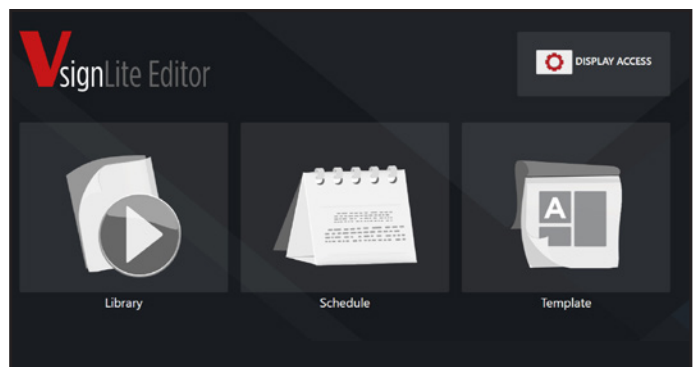
Schedule

VSignLite lets users create daily schedules and channels to play within different time slots of a day. Specified channels are displayed in specified slots without the need of manual operation.



Template

Users can select pre-defined templates and locate the contents to specific areas. VSignLite provides various templates such as full screen layouts and area-divided layouts with text and banner widget options. Related contents can be uploaded, scheduled and played.



VSignLite Editor

With VSignLite Editor, content and device management through local area network is possible! Pre-defined templates can be scheduled and pushed to selected displays which are connected to same local area network.