



Plasmacluster
only from SHARP

20th Years Anniversary



AIR PURIFIERS

SHARP

Be Original.

sharphomeappliances.com

PLASMACLUSTER TECHNOLOGY: PURIFY AIR WITH THE SAME IONS AS IN NATURE

Plasmacluster - Only from SHARP

Plasmacluster Ions are positive and negative Ions that occur in nature.

Plasmacluster is air-purifying technology. Its effectiveness has been supported by test data, and Plasmacluster is thus increasingly finding applications in various areas of activity, such as in businesses, in addition to household use. Plasmacluster provides you with natural and safe air.

This unique technology from Sharp applies the power of nature.



Sharp's original technology since 2008

Plasma discharge generates and emits the same positive and negative Ions that occur in nature. Plasmacluster technology is Sharp's original air purifying technology that removes airborne mold and viruses.



Winner of the 2008 Invention Prize

National Invention Awards Ceremony held by the Japan Institute of Invention and Innovation (JiIi)

Patented by Sharp (patent number 3680121)

Assured safety

GLP*-compliant test facilities have gathered highly reliable safety data on Sharp's Plasmacluster technology

PURPOSE	TEST NAME (ABBREVIATION)	ION DENSITY SETTING
Skin irritancy (general condition)	Acute skin irritation / corrosion	Approx. 1 000 000 ions/cm ³
Eye irritancy (general condition)	Acute eye corrosion irritation / corrosion	Approx. 13 000 000 ions/cm ³
Gene toxicity (general condition)	Inhalation toxicity (evaluation of genetic effect on pulmonary tissue)	Approx. 7 000 000 ions/cm ³
Body and organ toxicity (general condition)	Inhalation toxicity	Approx. 7,000,000 ions/cm ³
Pregnant woman and fetus toxicity (general condition)	Inhalation toxicity	Approx. 7,000,000 ions/cm ³

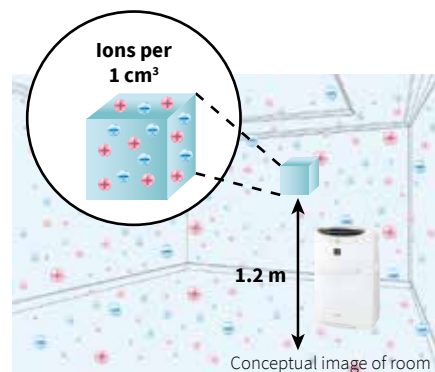
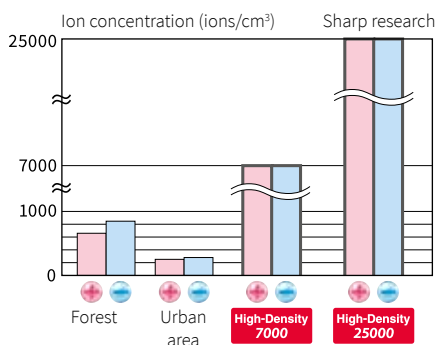
Testing institution: LSI Medience Corporation

* GLP (good laboratory practice) is a system of management controls for test facilities and test procedures designed to ensure the reliability of chemical safety assessment tests.

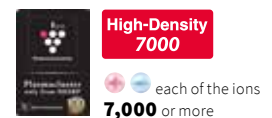


The same safe Ions as in nature

The safety of Plasmacluster Ions has been verified, and so a high density of Ions can be used. With more positive and negative Ions in a room than even in a forest, Plasmacluster provides an environment of even greater effectiveness.



Number of ions \oplus and \ominus per 1 cm³ when measured near the center of a room (at a height of 1.2 m from the floor) with the product placed at a wall:



PLASMACLUSTER AIR PURIFIERS PROVIDE SOLUTIONS FOR AIR-QUALITY CONCERNS

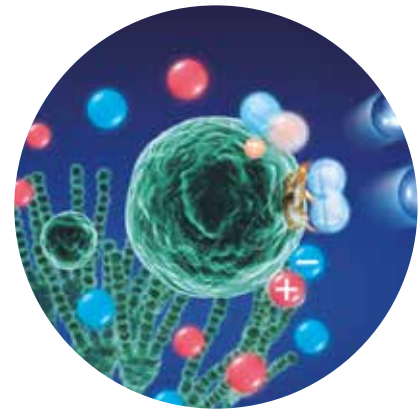
Plasmacluster Ions clean the room air



REMOVING OF AIRBORNE MOLD

Result after approx. 49 minutes in a testing space of approx. 25 m³.

- Tested by: Japan Food Research Laboratories
- Test result certificate: No. 15061723001-0101
- Test method: Performance evaluation test according to voluntary standard HD-131 of the Japan Electrical Manufacturers' Association in a testing space of approx. 25 m².
- Object tested: One type of airborne mold.
- Test result: 99% reduction in approx. 49 minutes. Tested with an FP-F30 operating at the High airflow setting.



High-Density
25000

High-Density
7000



REDUCING GROWTH OF ADHERING MOLD

Result after approx. three days (one day as 24 hours) in a testing space of approx. 20 m³.

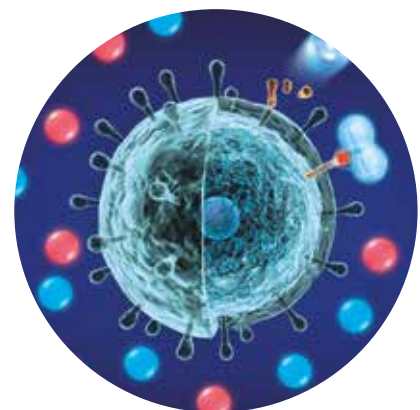
- Tested by: Shokukanken Inc.
- Test method: Emission of Plasmacluster Ions with vinyl chloride plate with adhering mold placed in testing space. Comparison of mold growth area with reference to JIS Z 2911.
- Test result: Limitation of growth after 3 days. Tested with a KI-A60 operating at the High airflow setting.

High-Density
25000

SUPPRESSING THE ACTIVITY OF AIRBORNE VIRUSES

Result after approx. 18 minutes in a testing space of approx. 25 m³.

- Tested by: Pasteur Institute in Ho Chi Minh City, Vietnam
- Test method: Performance evaluation test according to voluntary standard JEM 1467 of the Japan Electrical Manufacturers' Association in a testing space of approx. 25 m³.
- Object tested: One type of airborne virus.
- Test result: 99% reduction in approx. 18 minutes. Tested with an FP-F30 operating at the High airflow setting.



High-Density
25000

High-Density
7000



High-Density
25000

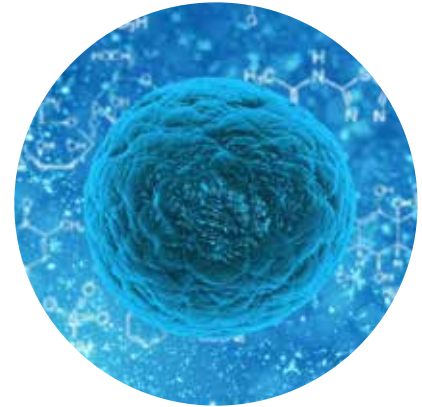
High-Density
7000

In this technology, the number means the approximate number of ions per 1 cm³ of air when measured near the center of a room (at a height of 1.2 meter from the floor) on appropriate floor surface and with maximum airflow when Plasmacluster ion generator using the device emitting high-concentration Plasmacluster ions is placed at a wall.

SUPPRESSING THE ACTIVITY OF ADHERING VIRUSES

Result after approx. 10 hours in a testing volume of approx. 25 m³.

- Tested by: Shokukanken Inc.
- Test method: Performance evaluation test according to voluntary standard JEM 1467 of the Japan Electrical Manufacturers' Association in a testing volume of approx. 25 m³.
- Object tested: One type of adhering virus.
- Test result: 99% reduction in approx. 10 hours. Tested with a KI-A60 operating at the High airflow setting.

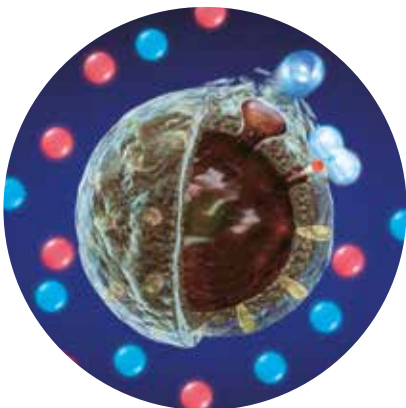


High-Density
25000

SUPPRESSING THE ACTIVITY OF AIRBORNE MICROBE

Result after approx. 51 minutes in a testing volume of approx. 25 m³.

- Tested by: Japan Food Research Laboratories
- Test result certificate: No.15061721001-0101
- Test method: Performance evaluation test according to voluntary standard HD-131 of the Japan Electrical Manufacturers' Association in a testing volume of approx. 25 m³.
- Object tested: One type of airborne microbe.
- Test result: 99% reduction in approx. 51 minutes. Tested with an FP-F30 operating at the High airflow setting.



High-Density
25000

High-Density
7000

SUPPRESSING THE ACTIVITY OF AIRBORNE ALLERGENS FROM DUST MITE FECES AND REMAINS

Result after approx. 51 minutes in a testing volume of approx. 25 m³.

- Tested by: ITEA Inc.
- Test method: Allergens from dust mite feces and remains were suspended in the air in a testing space of approx. 25 m³. Measurement method: ELISA.
- Test result: 99% reduction in approx. 51 minutes. Tested with an FP-F30 operating at the High airflow setting.

High-Density
25000

High-Density
7000



PLASMACLUSTER IONS AND AIR-PURIFICATION TECHNOLOGY REMOVE HAZE

IT WAS PROVED THAT SHARP'S PLASMACLUSTER ION AND AIR PURIFYING TECHNOLOGY HAS THE EFFECT ON A HAZE IN COLLABORATION WITH UNIVERSITY PUTRA MALAYSIA

The study found that a harmful substance such as toluene, pentanone is included organic chemicals in HAZE.

Plasmacluster Ions reduce 98% of toluene and 70% of pentanone

- Tested by: Sumika Chemical Analysis Service, Ltd.
- Test method: 20 liters of air was exposed to ions in concentration of 2 million per cm^3 . Air exposed to Plasmacluster ions was compared to air not exposed to such ions. Also measured was the reduction efficacy for toluene and pentanone.
- Test result: After 24 hours, 91% of toluene and 44% of pentanone were removed, increasing to 98% and 70% after 48 hours.

Air-purification technology removes 99% of haze particles as small as in size $0.06 \mu\text{m}$

- Tested by: Sharp
- Test method: KC-D60 and KC-D40 were installed in a separate room with an area of 25.6 m^3 , clean ions stream mode was activated.
- Test result: The air purifiers each required approx. 30 minutes to remove 99% of haze particles $0.06 \mu\text{m}$ or larger in size.



REDUCING STATIC ELECTRICITY

High-Density
7000

High-Density
25000

Reducing static electricity

Result after approx. 2.7 minutes for the KI-A60 and approx. 13 minutes for the FP-F30 in a testing space of approx. 41 m^3 .

- Tested by: Sharp
- Test method: Measurement of time required for a metal sensing plate charged to 5 kV to decrease in charge to 0.5 kV when irradiated with Plasmacluster Ions (tested with reference to JIS TR C 0027-1).
- Test result: As described above.



REMOVING STUBBORN ODORS WITH PLASMACLUSTER

High-Density
7000

High-Density
25000

BREAKDOWN AND ELIMINATION OF CLINGING ODORS

Breakdown and removal of clinging cigarette odor

Result after approx. 55 minutes for the KI-A60 and approx. 90 minutes for the FP-F30 in a testing space of approx. 41 m³.

- Tested by: Sharp
- Test method: The effectiveness of deodorizing a cloth swatch impregnated with cigarette odor components and irradiated with Plasmacluster Ions was evaluated by using the six-level odor intensity indication method.
- Test result: Deodorized to unnoticeable levels in the times stated above.

Spot deodorization of sweat odor clinging to clothing in approx. 6 hours

- Tested by: Sharp
- Test method: The effectiveness of deodorizing a cloth swatch impregnated with sweat odor components and irradiated with Plasmacluster was evaluated by using the six-level odor intensity indication method.
- Test result: Deodorized to unnoticeable level in about six hours. Tested with an FP-F30 operating at the Low airflow setting

Spot deodorization of damp-dry odor on clothes drying indoors in approx. 3 hours.

- Tested by: Sharp
- Test method: The effectiveness of deodorizing a cloth swatch impregnated with damp-dry odor components on clothes drying indoors and intensively irradiated with Plasmacluster Ions was evaluated by using the six-level odor intensity indication method.
- Test result: Deodorized to unnoticeable level in approx. three hours. Tested with an FP-F30 operating at the Low airflow setting. Odors at portions not directly subjected to the airflow cannot be removed.

Note: The effect can be obtained when KI series models work with medium airflow and when FU series models work with strong airflow. Deodorizing efficacy depends on factors like odor type and intensity, and the material from which the object subjected to the process of odor elimination is made.



SKIN-BEAUTIFYING EFFECTS OF HIGH-DENSITY PLASMACLUSTER IONS

High-Density
25000

Beautifying skin with a lustrous sheen

Result after approx. 20 minutes in a testing space of approx. 41 m³.

- Tested by: Soiken Inc.
- Subjects tested: 21 women, ages 36 to 63
- Temperature: Approx. 25°C, Humidity: Approx. 45%
- Test method: Measurement of skin moisture levels at the corners of the eyes of subjects at rest.
- Test result: An effect of providing luster to skin after 20 minutes of operation was verified. Tested with a KI-A60 operating with humidifying air purification at the Med setting.



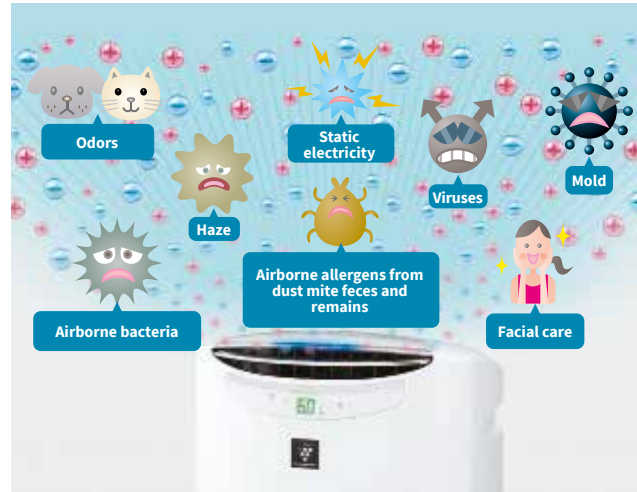
PLASMACLUSTER AIR PURIFIER THREE-STEP DUST COLLECTION SYSTEM



1

REMOVAL OF

Plasmacluster ions eliminate mold*¹, viruses*², allergens*³, unpleasant odors*⁴ and static electricity

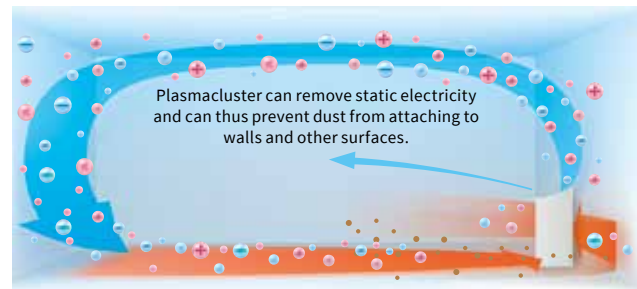


2

COLLECT

Powerful air suction and unique airflow quickly and efficiently collect dust and other particles

Faster airflow at a 20° angle collects dust at lower levels in the room for more effective cleaning.



3

CAPTURE

High-performance filters capture airborne dust particles

REMOVAL OF MICRON-SIZE DUST PARTICLES INCLUDING 0.3-MICRON VIRUSES AND DUST ALLERGENS

Dust-Collecting HEPA filter*⁵
No need of replacement for 10 years*⁶



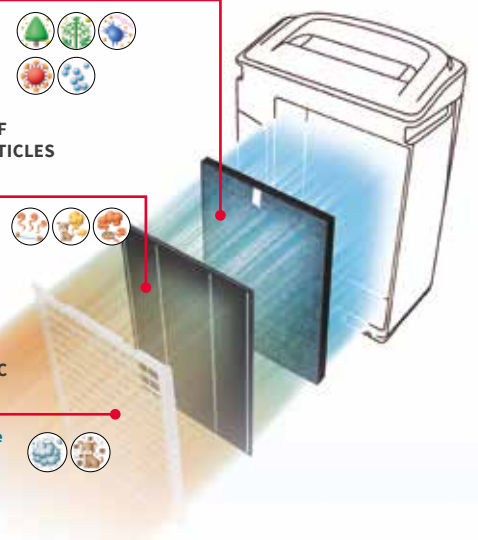
HIGH PERFORMANCE OF CAPTURING ODOR PARTICLES MAINTAINED

High-Performance Double Deodorizing Filter
No need for cleaning for 10 years*⁷
Easy maintenance by simply wiping.



CAPTURE MICROSCOPIC DUST PARTICLES

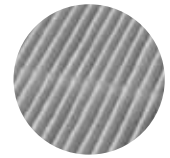
Anti Microbal/Mold*⁹ Fine Meshed Rear Panel Filter**
No need for replacement
Easy maintenance by simply wiping the filter without detaching it.



HEPA FILTER*

Enlargement of HEPA filter*⁵

The larger the surface area of the filter, the more dust and other harmful particles are captured.



The filter measures as long as approx.
8 m.

WHAT DOES THE HEPA FILTER CAPTURES*⁵

99.97%*¹⁰ of absorbed and removed dust particles measuring 0.3 micron



Tree pollen

Cedar, cypress, birch, alder, beech, red cedar, oak, pine



Grass pollen

Ragweed, wormwood, hop, orchard grass, vernal grass, timothy grass



Allergens

Dust mite feces, dust mite remains, dog dander, cat dander, hamster dander, mold



Viruses



Airborne microbes



Airborne mold

Black mold, Stachybotrys, Aspergillus niger, Penicillium



Dust

Dust, pet hair, pet dander, cigarette smoke, cooking fumes, mite dust, diesel exhaust particles, Asian dust



Odors

Cigarette odor, pet odor, cooking odor, kitchen food waste odor, toilet odor, body odor, mold odor, ammonia odor

*1 Elimination of 99% of airborne mold in a test room of 31 m³ after 195 minutes of usage (tested by Ishikawa Health Services Association).

*2 Elimination of 99% of airborne viruses in a closed test room of 25 m³ after 18 minutes of usage (tested by Pasteur Institute in Ho Chi Minh)

*3 Efficacy in a test room of 31 m³ after four weeks of usage (one day: 24 hours; tested by the Graduate School of Advanced Sciences of Matter of Hiroshima University).

*4 Efficacy in a test room of 41 m³ after 80 minutes of usage. Efficacy depends on the type of unpleasant odor, its intensity, and the material from which the tested object is made (tested by Sharp).

*5 Filter absorbs over 99.97% of dust particles measuring 0.3 microns.

*6 With five cigarettes per day smoked. Depending on usage conditions, filter replacement may be needed.

*7 Deodorizing performance depends on the room conditions.

*8 Tested by Boken Quality Evaluation Institute. Test method: test compliant with JIS Z 2801 standard. Microbe development prevention method: filter is filled with active anti-bacterial substances. Test result: 99% of microbes are eliminated. Test object: microbes adhering to filter rear panel.

*9 Tested by Boken Quality Evaluation Institute. Test method: mold resistance test compliant with JIS Z 2911 standard. Mold development prevention: filter is filled with active anti-mold substances. Test result: lack of mold development.

*10 The value pertains to filter performance eliminating harmful particles, not to reduction in the whole room.

Dust removing and deodorizing performance of air purifiers

• Not all harmful substances in cigarette smoke, e.g., carbon monoxide, can be removed.

• Not all commonly occurring odors, e.g., building material odors and pet odors, can be removed.

* The filter itself may emit odor and may need replacement after several months, if purifier is used to remove strong odors, such as cigarette smoke or grilled meat odors.

If you want to remove strong odors, combine using the purifier with ventilating the rooms.

SERIE KI-G:

SMART AIR PURIFIER WITH HUMIDIFYING FUNCTION



5-sensor smart air purifier with Plasmacluster technology, humidifying function, and automatic pre-filter cleaning function.



Functions

- Intelligent purification and humidification mode based on input from 5 sensors: dust (also PM2.5), odors, light sensitivity, temperature and humidity adjustment
- Modes: Auto, Clean Assist, Ion Shower, Plasmacluster Ion Spot
- Plasmacluster technology
- Evaporation humidification
- Filters: pre-filter, deodorizing, HEPA, humidifying
- Water tank empty notification display
- Need to clean filter notification
- Humidifying mode indicator
- Fill water tank notification display
- SWING - automatic and manual airflow direction setting
- Ventilator speed setting (max/med/low)
- Automatic pre-filter cleaning
- Timer (on/off)
- Filter life up to 10 years
- Casters with a lock for an easy relocation
- Parental control



Model	KI-G75EU
Color	W (white)
Recommended area [m2]	56
Humidifying System	Natural Vaporization
Humidifying capacity*2 [ml/h]	4.0
PCI density [ions/cm3]	750
Plasmacluster Ion ON/OFF	25000
Plasmacluster Ion Spot	✓
Patrolling Function	Yes (Swing)
Intelligent Auto Operation	-
Auto operation	✓
Clean Ion Shower Mode	✓
Clean Air mode	✓
Clean Air Humidify mode (ON/OFF)	✓
Clean Assist mode	✓
Pre-Filter Clean mode	✓
Fan Operation modes	Auto / Pollen / Sleep / Low / Med / Max
20° Airflow Angle	✓
Auto restart	✓
Child lock	✓
Timer	On/Off
Clean sign indicator	✓
Light control button	✓
Odour sensor	✓
Dust sensor	✓
Temperature & humidity sensor	✓
Light sensor	✓
Motion sensor	-
Inverter operation	✓

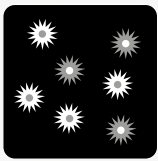
*1 Measured based on the JEMM 1467 standard of the Japan Electrical Manufacturers' Association.

*2 Recommended room size is measured based on the JEM1467 standard of the Japan Electrical Manufacturers' Association.

INTELLIGENT ENVIRONMENT ANALYSIS MODE (KI-G75 MODEL) WITH 6 SENSORS



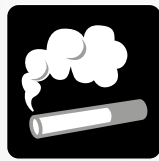
When AUTO button is selected, the process of air purification and humidification is controlled based on input from 5 sensors: dust (including PM2.5), odors, temperature, humidity and light.



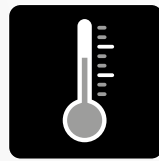
PM2.5



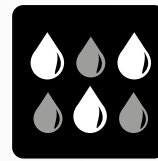
USUAL DUST



ODOR



TEMPERATURE



HUMIDITY



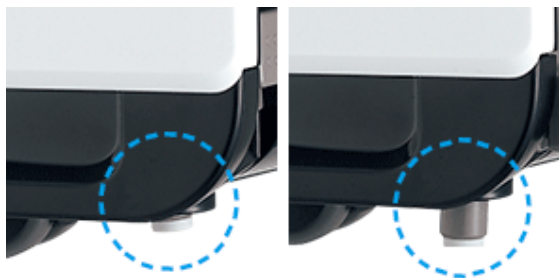
LIGHT



Large size of the rear panel increases air suction performance and range.



Three filters efficiently capture dust, unpleasant odors and microbes.



Stabilizing legs make it easy and safe to set the purifier.



Pre-filter purifying module.

SERIE KC-G:

AIR PURIFIERS WITH HUMIDIFYING FUNCTION



Optimum operation with one button. Sensor monitoring of room conditions automatically provides humidifying and purification.



Functions

- Unique combination of air treatment technologies
- Triple filtration system + Plasmacluster Ion + Humidification
- Humidifying system: Natural vaporization
- Intelligent mode analyzing 7 environmental factors with 6 sensors (incl. PM2.5) (KC-G50/60 models)
- Traps dust, decreases odours
- Reduces tiny dust, pollen & mold
- Refreshes and humidifies
- Operation modes: Max / Med / Low / Pollen / Sleep
- Auto restart
- Timer (on/off)
- 4 type of filters: Dust collection, Deodorization, Pre-filter, Humidifying
- Filter life up to 10 years
- Cleanliness Monitor (7 levels)
- Light sensor



Model	KC-G60EU	KC-G50EU	KC-G40EU
Color	W (white)	W (white), H (charcoal gray)	-W (white), H (charcoal gray)
Recommended area [m2]	~50	~38	~28
Humidifying System	Natural Vaporization	Natural Vaporization	Natural Vaporization
Tank capacity	3.0	2.5	2.5
Humidifying capacity*2 [ml/h]	630	450	400
PCI density [ions/cm3]	7000	7000	7000
Plasmacluster Ion ON/OFF	✓	✓	✓
Plasmacluster Ion Spot	✓	✓	✓
Patrolling Function	✓	✓	✓
Intelligent Auto Operation	✓	✓	-
Auto operation	-	-	✓
Clean Ion Shower Mode	✓	✓	✓
Clean Air mode	✓	✓	✓
Clean Air Humidify mode (ON/OFF)	✓	✓	✓
Clean Assist mode	-	-	-
Pre-Filter Clean mode	-	-	-
Fan Operation modes	Pollen / Sleep / Low / Med / Max	Pollen / Sleep / Low / Med / Max	Pollen / Sleep / Low / Med / Max
20° Airflow Angle	✓	✓	✓
Auto restart	✓	✓	✓
Child lock	✓	✓	✓
Timer	On/Off	On/Off	On/Off
Clean sign indicator	Yes (7 steps)	Yes (7 steps)	Yes (7 steps)
Light control button	Yes (bright / dim / off)	Yes (bright / dim / off)	Yes (bright / dim / off)
Odour sensor	✓	✓	-
Dust sensor	✓	✓	✓
Temperature & humidity sensor	✓	✓	✓
Light sensor	✓	✓	✓
Motion sensor	✓	✓	-
Inverter operation	✓	✓	✓

*1 Measured based on the JEMM 1467 standard of the Japan Electrical Manufacturers' Association.

*2 Recommended room size is measured based on the JEM1467 standard of the Japan Electrical Manufacturers' Association.

AIR PURIFIERS WITH HUMIDIFYING FUNCTION

(KC-G60/G50/G40, KC-D60/D50/D40)



Automatically rotating humidifying structure creates clean humidity conditions

Water tank

Water particle
Approx. 0.4 mm

Steam particle (steam)
3000 to 15000 nm

Plasmacluster Ion Generator
Approx. 2 to 9 nm

Rotating humidifying mechanism structure
When humidifying is not performed, the filter disc rotation stops and remains free of water immersion and dries with ventilation, thus keeping the filter disc clean and preventing mold growth.

Humidifying filter providing protection from microbes*1 and mold*2
No need of replacement for 10 years*3

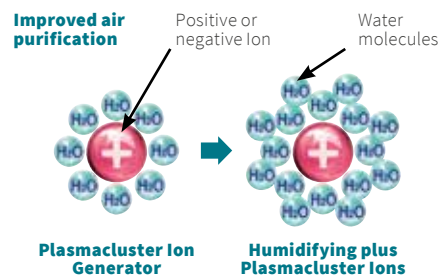
KC-G simulated image

* 3 Time for the humidifying performance to decrease by 50% relative to the rated value assuming eight hours of operation per day. The filter service life depends on the room conditions and usage. Periodic cleaning is required.

COMFORTABLE HUMIDITY INDOORS KEEPS YOUR SKIN AND THROAT MOISTURIZED AND HEALTHY

Minute water molecules from moisture delivered by vapor humidifying prevent nose and throat dryness.

Humidifying doubles the Plasmacluster Ion endurance and air purifying speed.*4

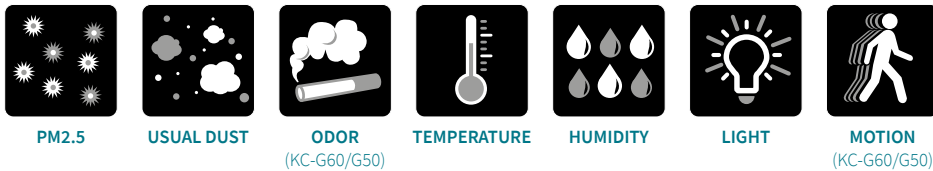


* 1 Tested by Boken Quality Evaluation Institute. Test method: test compliant with JIX Z2801 standard. Microbe development prevention method: filter is filled with active anti-bacterial substances. Test result: 99% of microbes are removed.
 * 2 Tested by Boken Quality Evaluation Institute. Test method: mold resistance test compliant with JIS Z 2911 standard. Mold development prevention: filter is filled with active anti-mold substances. Test result: lack of mold development.
 * 4 Tested by Japan Food Research Laboratories. Test method: Plasmacluster ions were released in a test room with floor area of 8 m². Using a probe, the amount of air-borne mold was measured, then, the approximate values for with-humidifying and no-humidifying were compared.

INTELLIGENT MODE ANALYZING 7 ENVIRONMENTAL FACTORS (KC-G50/60 MODELS)



Once you press the button, everything operates automatically. Humidifying and air purification are controlled according to the impurities, odors, temperature, and humidity of the air in the room. Also, a motion sensor detects whether people are present, working in coordination with a light sensor to automatically switch to energy-saving operation.



PLASMACLUSTER SPOT MODE

A high-density concentration of Plasmacluster Ions are discharged forward. This is effective in removing odors, bacteria, and viruses clinging in remote areas of the room.

Concentration of ions approx.

10 times higher or more

(compared with airflow at the medium setting)



Effect of Plasmacluster Spot mode deodorization and bacteria removal

Removal of clinging odors*					Removal of clinging bacteria*
Cigarette odor	Pet odor	Odor of wet clothes drying indoors	Sweat odor	Cooking odor	Clinging bacteria
Approx. 30 minutes	Approx. 6 hours	Approx. 3 hours	Approx. 6 hours	Approx. 2 hours	Approx. 8 hours

Effect after the above times at a position approx. 70 cm from the floor and 50 cm from the front discharge outlet.
*www.sharp-world.com

SIMPLE OPERATION FOR EASY EVERYDAY USE

WATER TANK

Enables easy cleaning and convenient water supply

Handle for easy carrying in one hand.

Self-standing tank prevents tipping over when refilling
Convenient height for refilling.

Large-diameter cap enables tank cleaning by hand.



UNIT PLACED CLOSE TO A WALL

The unit can be placed as close as 3 cm from a wall. Rear suction performance is not hindered.



As close as **3 cm*** from a wall

* Move the device, if the neighboring walls or furniture may get dirty.

CASTERS WITH STOPPERS

Easily move the unit to the left and right by rolling it on casters.



Easily slide the unit to the left and right.

Casters enable moving the unit simply even with only one hand.

APPROVED BY THE BRITISH ALLERGY FOUNDATION

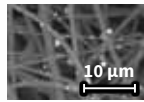
The British Allergy Foundation has tested KI, KC, and FU-series Sharp Plasmacluster air purifiers and verified that airborne allergens including dust mite feces and remains, as well as pollen, are removed.



THREE FILTERS RELIABLY CAPTURE DUST, GAS, AND ODORS.

Electrostatic HEPA filter

Traps 99.97% of microscopic particles (as small as 0.3 micron) in the air.



Allergens & Microscopic dust



Double deodorizing Filter

Absorbs cigarette odor, harmful gases contained in SMOG* and other common unpleasant home odors.

New pre-filter

Captures larger than approx. 240 micron dust particles, washable.

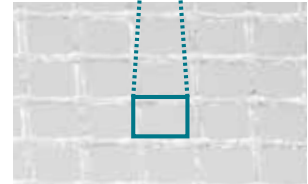
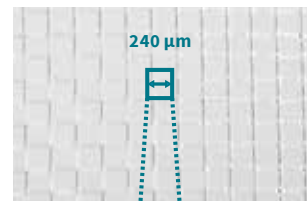


VOC
(volatile organic compounds)

NOx
(nitrous oxides)

SOx
(sulfur oxides)

Cigarette odor/General odor in house/Harmful gases in HAZE.*



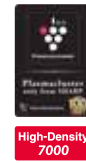
Pet hair/Large dust particle



* Toluene, ethylbenzene, xylene etc. Efficacy of eliminating unpleasant odor of a particular substance in test container of 1m³ may differ from actual efficacy when used.

SERIE KC-D:

AIR PURIFIERS WITH HUMIDIFYING FUNCTION



Plasmacluster air purifiers with special features meeting local needs



Functions

- Unique combination of air treatment technologies
- Triple filtration system + Plasmacluster Ion + Humidification
- Humidifying system: Natural vaporization
- 4 sensors (KC-D50/60)
- Traps dust
- Decreases odours
- Reduces pollen & mold
- Freshens
- Humidifies
- Operation modes: Auto / Auto advanced / Max / Med / Low/ Pollen
- Auto restart
- Timer (on/off)
- 4 type of filters: Dust collection, Deodorization, Pre-filter, Humidifying
- Filter life up to 10 years
- Clean sign indicator (Dust / Odour Monitor / Humidity light)
- Light control button: bright, dim or off



Model	KC-D60EU	KC-D50EU	KC-D40EU
Color	W (white)	W (white), H (charcoal gray)	W (white), B (black), H (charcoal gray)
Recommended area [m2]	~48	~38	~26
Humidifying System	Natural Vaporization	Natural Vaporization	Natural Vaporization
Tank capacity	3.0	2.5	2.5
Humidifying capacity*2 [ml/h]	660	600	440
PCI density [ions/cm3]	7000	7000	7000
Plasmacluster Ion ON/OFF	✓	✓	✓
Plasmacluster Ion Spot	-	-	-
Patrolling Function	-	-	-
Intelligent Auto Operation	-	-	-
Auto operation	✓	✓	✓
Clean Ion Shower Mode	✓	✓	✓
Clean Air mode	✓	✓	✓
Clean Air Humidify mode (ON/OFF)	✓	✓	✓
Clean Assist mode	-	-	-
Pre-Filter Clean mode	-	-	-
Fan Operation modes	Auto / Advanced Auto / Pollen / Low / Med / Max	Auto / Advanced Auto / Pollen / Low / Med / Max	Auto / Advanced Auto / Pollen / Low / Med / Max
20° Airflow Angle	✓	✓	✓
Auto restart	✓	✓	✓
Child lock	✓	✓	✓
Timer	On/Off	On/Off	On/Off
Clean sign indicator	Yes (5 steps)	Yes (5 steps)	Yes (5 steps)
Light control button	Yes (bright / dim / off)	Yes (bright / dim / off)	Yes (bright / dim / off)
Odour sensor	✓	✓	-
Dust sensor	✓	✓	✓
Temperature & humidity sensor	✓	✓	✓
Light sensor	-	-	-
Motion sensor	-	-	-
Inverter operation	✓	✓	✓

*1 Measured based on the JEMM 1467 standard of the Japan Electrical Manufacturers' Association.

*2 Recommended room size is measured based on the JEM1467 standard of the Japan Electrical Manufacturers' Association.

HIGH CONCENTRATION OF PLASMACLUSTER IONS MODE (KC-D60EU/D50EU/D40EU)

The KC-D60/50/40 EU models have a new Clean Ion Shower mode.

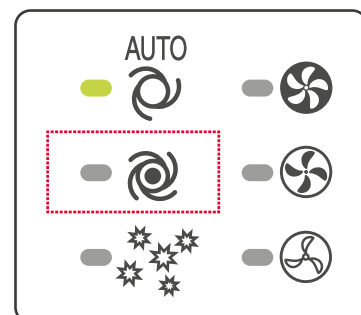
When it starts, releases high-density Plasmacluster Ions and discharges strong air flow for 60 minutes. The unit releases Plasmacluster Ions with the maximum air flow and collects dusts while decreasing static electricity for 10 minutes. After that, the unit operates while humidifying with strong air flow for 50 minutes. The unit stops humidifying and the Humidify Light will turn off once humidity reaches a proper level.



ADVANCED AUTO MODE

In the rainy season, the increased humidity levels allow rapid mold growth. When the humidity is high, the Advanced Auto mode delivers a stronger airflow than in the Auto mode. The dispersed Plasmacluster Ions remove airborne mold, as well as reducing the growth of clinging mold on surfaces.

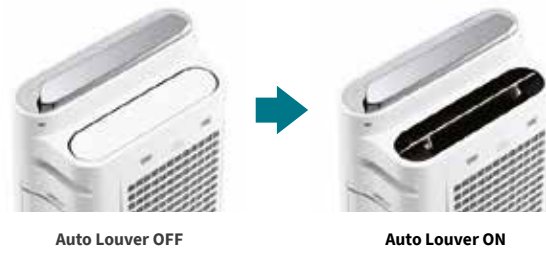
Advanced auto mode will get activated when air humidity level exceeds 70%.



*1 Measured based on the JEM1467 standard of the Japan Electrical Manufacturers' Association.

AUTO LOUVER FOR CLEAN AND EFFICIENT AIR CIRCULATION

The new KC-D60EU / KC-D50EU / KC-D40EU is equipped with an Auto Louver. When the purifier turns on, the louver opens automatically, and when the purifier turns off, the louver closes to prevent dust from getting inside.



SIMPLE OPERATION FOR EASY EVERYDAY USE

Casters with stoppers

Easily move the unit to the left and right by rolling it on casters. To secure the unit, lock the casters with stoppers.



MONITORS FOR DUST AND ODOUR*, HUMIDITY, AND HUMIDIFYING INDICATE THE CONDITIONS OF THE ROOM AIR

On/Off Timer for Convenient Use

The On timer can be set to up to 14 hours in increments of 2 hours, and the Off timer can be set to 1, 2, 4 and 8 hours.



SERIE KC-A:

AIR PURIFIERS WITH HUMIDIFYING FUNCTION



Plasmacluster air purifiers with special features meeting local needs



Functions

- Unique combination of air treatment technologies
- Triple filtration system + Plasmacluster Ion + Humidification
- Humidifying system: Natural vaporization
- 4 sensors
- Traps dust
- Decreases odours
- Reduces pollen & mold
- Freshens
- Humidifies
- Operation modes: Auto / Max / Med / Low / Pollen
- Auto restart
- 4 type of filters: Dust collection, Deodorization, Pre-filter, Humidifying
- Filter life up to 10 years
- Light control button: bright, dim or off
- Quiet device



Model	KC-A60EU	KC-A50EU	KC-A40EU
Color	W (white)	W (white), B (black)	W (white), B (black)
Recommended area [m2]	~48	~38	~26
Humidifying System	Natural Vaporization	Natural Vaporization	Natural Vaporization
Tank capacity	4.0	3.6	3.0
Humidifying capacity ^{*2} [ml/h]	730	600	450
PCI density [ions/cm3]	7000	7000	7000
Plasmacluster Ion ON/OFF	✓	✓	✓
Plasmacluster Ion Spot	-	-	-
Patrolling Function	-	-	-
Intelligent Auto Operation	-	-	-
Auto operation	✓	✓	✓
Clean Ion Shower Mode	✓	✓	✓
Clean Air mode	✓	✓	✓
Clean Air Humidify mode (ON/OFF)	✓	✓	✓
Clean Assist mode	-	-	-
Pre-Filter Clean mode	-	-	-
Fan Operation modes	Auto / Pollen / Low / Med / Max	Auto / Pollen / Low / Med / Max	Auto / Pollen / Low / Med / Max
20° Airflow Angle	-	-	-
Auto restart	✓	✓	✓
Child lock	✓	✓	✓
Timer	-	-	-
Clean sign indicator	Yes (5 steps)	Yes (5 steps)	Yes (5 steps)
Light control button	Yes (bright / dim / off)	Yes (bright / dim / off)	Yes (bright / dim / off)
Odour sensor	✓	✓	-
Dust sensor	✓	✓	✓
Temperature & humidity sensor	✓	✓	✓
Light sensor	-	-	-
Motion sensor	-	-	-
Inverter operation	✓	✓	✓

*1 Measured based on the JEMM 1467 standard of the Japan Electrical Manufacturers' Association.

*2 Recommended room size is measured based on the JEM1467 standard of the Japan Electrical Manufacturers' Association.

AIR PURIFIER WITH HIGH-CONCENTRATION PLASMACLUSTER IONS TECHNOLOGY AND HUMIDIFYING FUNCTION

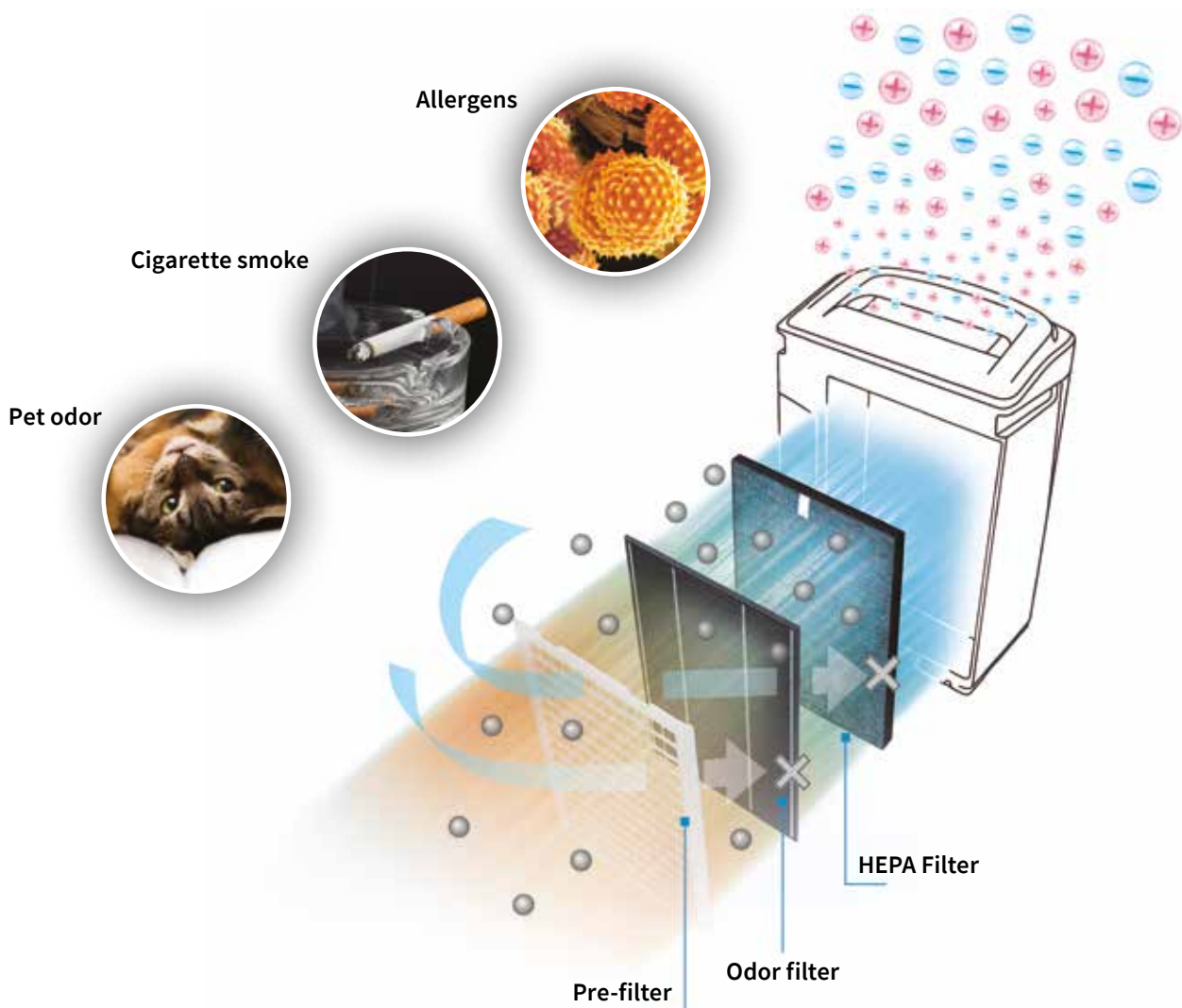
(KC-A60/A50/A40)



SMART AIR PURIFIERS

with Plasmacluster technology and humidifier function

KC-A purifiers are equipped with automatic evaporation humidifiers. The device is characterized by low noise levels in all working modes (one of the quietest purifiers in class, only 16-19 dB in night mode). Sharp purifiers enable both passive and active purifying, which makes it possible to capture almost 100% of impurities from the air. First, the air goes through the pre-filter, where larger impurities like dust or animal hair are captured. Then it goes through the charcoal filter (odor) which effectively absorbs air-borne organic compounds (e.g. formaldehyde and strongly carcinogenic benzo a pyrene). The last stage of passive air purification inside the device is the HEPA filter - it stops practically all mechanical impurities. Active purification is provided by Plasmacluster ion generator.



AIR PURIFIER WITH HIGH-CONCENTRATION PLASMACLUSTER ION GENERATOR, HUMIDIFYING FUNCTION, UNIQUE SYSTEM OF AIR CIRCULATION INTENDED FOR HOME USE.

SYSTEM OF SENSORS

Sensors installed in the purifiers ensure precise measurement of temperature, humidity, dusts, and presence of unwanted odors in the room. Thanks to them, product's working is optimally adjusted to the conditions.



CLEAN AIR

Sharp purifiers equipped with Plasmacluster technology emit ions which surround harmful particles and de-activate them, making the air clean and fresh.



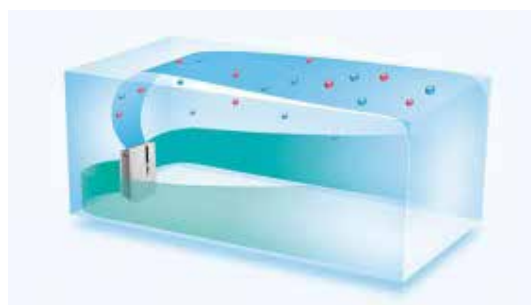
PEACEFUL AND QUIET

Thanks to the low noise level and display which can be switched-off, air purifiers from Sharp are an excellent solution for the bedroom: they purify the air and ensure peaceful, conformable sleep.

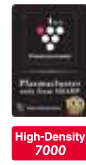


FRIENDLY FOR ALLERGY SUFFERERS

Sharp purifiers clean the air from allergens - such as dust mites and pollen, thanks to which allergy sufferers are less affected by seasonal symptoms.



KC-F SERIES: AIR PURIFIERS WITH HUMIDIFYING FUNCTION



Air purifier model with humidifying system and HEPA filter



Functions

- Unique combination of air treatment technologies
- Triple filtration system + Plasmacluster Ion
- + Humidification
- Humidifying system: Natural vaporization
- 3 sensors
- Traps dust
- Decreases odours
- Reduces pollen & mold
- Freshens
- Humidifies
- Operation modes: Auto / Sleep / Med / Max
- Auto restart
- OFF Timer
- 4 type of filters: Dust collection, Deodorization, Pre-filter, Humidifying
- Filter life up to: HEPA 2 years / Deodorizing filter 2 years / Humidifying 5 years
- Humidity / temperature monitor
- Light control button: On / Off



Model: KC-F32EU

Color	W (White)
Recommended area for air purifying ¹ [m ²]	~21
Humidifying System	Natural vaporization
Tank capacity	1.8
Humidifying capacity [ml/h]	350
PCI density [ions/cm ³]	7000
Plasmacluster Ion ON/OFF	✓
Plasmacluster Ion Spot	-
Patrolling Function	-
Intelligent Auto Operation	-
Auto operation	✓
Clean Ion Shower Mode	✓
Clean Air mode	-
Clean Air Humidify mode (ON/OFF)	-
Clean Assist mode	-

Pre-Filter Clean mode	-
Fan Operation modes	Auto / Sleep / Med / Max /
20° Airflow Angle	✓
Auto restart	✓
Child lock	-
Timer	Off
Clean sign indicator	Yes (3 steps)
Light control button	Yes (bright / off)
Odour sensor	-
Dust sensor	✓
Temperature & humidity sensor	✓
Light sensor	-
Motion sensor	-
Inverter operation	✓

CONVENIENT FEATURES FOR EVERYDAY COMFORT

Sleep mode

When Sleep mode is turned on, the fan automatically switches to low speed and fan operation becomes quiet. Also, the Indication Monitor turns off so that your sleep is undisturbed.



¹ Measured based on the JEMM 1467 standard of the Japan Electrical Manufacturers' Association.

FLOATING HUMIDIFICATION SYSTEM WITH HUMIDIFYING FILTER FLOATING ON WATER

Fill the humidifying tray directly with tap water

The humidifying filter operates according to the water level, and so the humidifying level is kept constant, with humidity controlled through adjustment of the airflow by sensors detecting the temperature and humidity levels in the room.

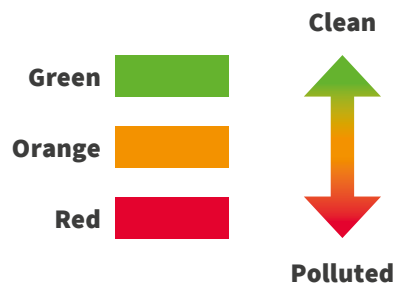


DETAILED INFORMATION ABOUT THE LEVEL OF POLLUTION AND HUMIDITY IN THE ROOM



Pollution indicator

Three-color indicator informs about the air quality in the room.



FP-J SERIES: AIR PURIFIER WITH PLASMACLUSTER



5-sensor smart air purifier with Plasmacluster technology, humidifying function, and automatic pre-filter cleaning function.



Functions

- Collects dust - Pre-filter collects dust and other large air-borne particles
- Reduces odors - Odor filter absorbs many common household odors
- Reduces pollen and mold - HEPA filter stops 99.97% particles measuring around 0.3 microns (JEM1467)
- Clean Ion Shower Mode
- Plasmacluster Ion Spot Mode
- Unique air flow
- PM2.5 air quality monitor
- A system of sensors continuously monitors air quality, automatically adjusting working mode to air cleanliness
- Dust, odor, light, temperature and air moisture sensors
- Fan operation modes: Auto/Pollen/Sleep/Low/Med/Max
- On and off timer
- Sensor sensitivity regulation
- AutoRestart
- Child lock



Model	FP-J80	FP-J60	FP-J40	FP-J30
Color	W (white) H (charcoal gray)	W (white) H (charcoal gray)	W (white)	A (blue), P (pink), B (black)
Recommended Area For Air Purifying ¹	62	48	30	23
Humidifying System	-	-	-	-
Tank capacity	-	-	-	-
Humidifying capacity [ml/h]	-	-	-	-
PCI density [ions/cm ³]	25000	25000	7000	7000
Plasmacluster Ion ON/OFF	✓	✓	✓	✓
Plasmacluster Ion Spot	✓	✓	-	-
Patrolling Function	-	-	-	-
Intelligent Auto Operation	-	-	-	-
Auto operation	✓	✓	✓	✓
Clean Ion Shower Mode	✓	✓	✓	✓
Clean Air mode	✓	✓	✓	✓
Clean Air Humidify mode (ON/OFF)	✓	✓	✓	✓
Clean Assist mode	-	-	-	-
Pre-Filter Clean mode	-	-	-	-
Fan Operation modes	Max / Med / Low / Pollen / Sleep	Max / Med / Low / Pollen / Sleep	Max / Med / Sleep	Max / Med / Sleep
20° Airflow Angle	✓	✓	✓	✓
Auto restart	✓	✓	✓	✓
Child lock	✓	✓	✓	✓
Timer	On/Off	On/Off	Off	Off
Clean sign indicator	✓	✓	✓	-
Light control button	✓ (bright/dim/off)	✓ (bright/dim/off)	✓ (bright/dim/off)	-
Odour sensor	✓	✓	✓	-
Dust sensor	✓ (High Sensitive)	✓ (High Sensitive)	✓	-
Temperature & humidity sensor	✓	-	-	-
Light sensor	✓	✓	✓	-
Motion sensor	-	-	-	-
Inverter operation	✓	✓	✓	-

¹ Measured based on the JEMM 1467 standard of the Japan Electrical Manufacturers' Association.

SHARP'S ORIGINAL TECHNOLOGY

Plasma discharge generates and emits the same positive and negative ions that occur in nature. Plasmacluster technology is Sharp's original air purifying technology that removes airborne mold and viruses.

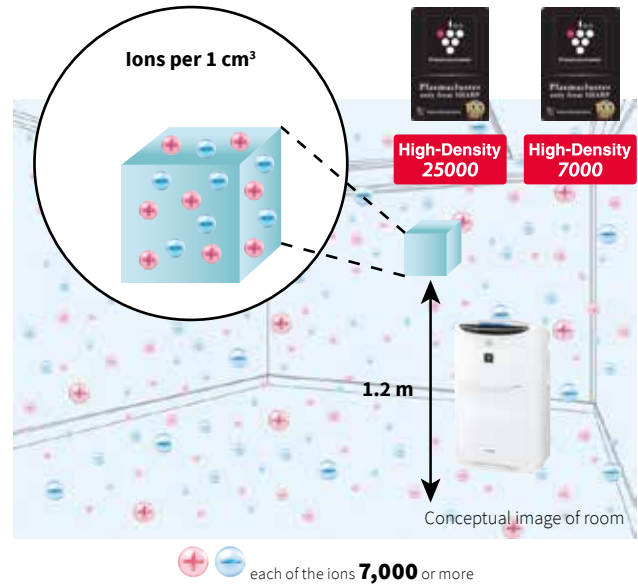
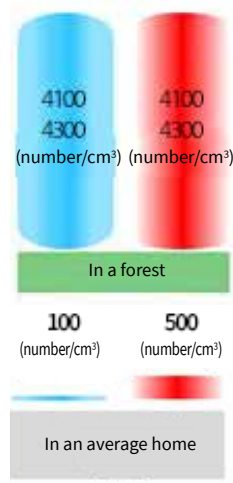
ASSURED SAFETY

GLP*-compliant test facilities have gathered highly reliable safety data on Sharp's Plasmacluster technology.

* GLP (good laboratory practice) is a system of management controls for test facilities and test procedures designed to ensure the reliability of chemical safety assessment tests. Testing institution: LSI Medience Corporation

THE SAME SAFE IONS AS IN NATURE

The safety of Plasmacluster ions has been verified, and so a high density of ions can be used. With more positive and negative ions in a room than even in a forest, Plasmacluster provides an environment of even greater effectiveness.



Numbers of \oplus and \ominus ions per 1 cm³ when measured near the center of a room (at a height of 1.2 m from the floor) with the product placed at a wall:

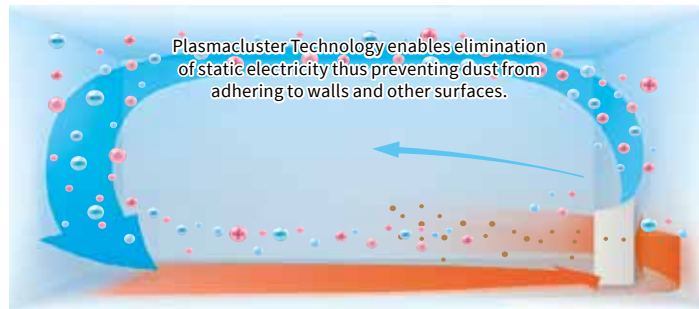
THE HIGHER THE DENSITY OF PLASMACLUSTER IONS AND AIR PURIFICATION SPEED, THE HIGHER THEIR EFFECTIVENESS

	Air purifying						Static electricity reduction	Deodorization			Skin beautifying effect
	Airpurifying				Adhering			Cigarette odor	Deodorization		
	Mold	Viruses	Microbes	Allergens	Mold	Viruses			Sweat odor	Smell of moisture	
High-Density 25000	14 mins	9 mins	14 mins	14 mins	3days	10 hours	2.7 mins	50 mins	6 hours	3 hours	20 mins
High-Density 7000	49 mins	18 mins	51 mins	51 mins			13 mins	90 mins	6 hours	3 hours	
Tested area	25 m ²	25 m ²	25 m ²	25 m ²	20 m ²	25 m ²	41 m ²	41 m ²			25 m ²



POWERFUL AIR SUCTION AND UNIQUE AIRFLOW QUICKLY AND EFFICIENTLY COLLECT DUST AND OTHER PARTICLES

Faster airflow at 20° angle enables capturing of dust at lower levels of the room and even more efficient purification.



HIGH CONCENTRATION OF PLASMACLUSTER IONS. EFFECTIVE REMOVAL OF UNPLEASANT ODORS, ADHERING BACTERIA AND VIRUSES IN THE ROOMS.



As children's immune system is weaker than adults' immune system, it is extremely important to provide them with clean air. Apart from visible impurities such as dust and pet hair, other impurities such as viruses and dust mites are hidden.



High-density Ion Shower Plasmacluster mode
Effectively purifies the air in the room.

Convenient functions:

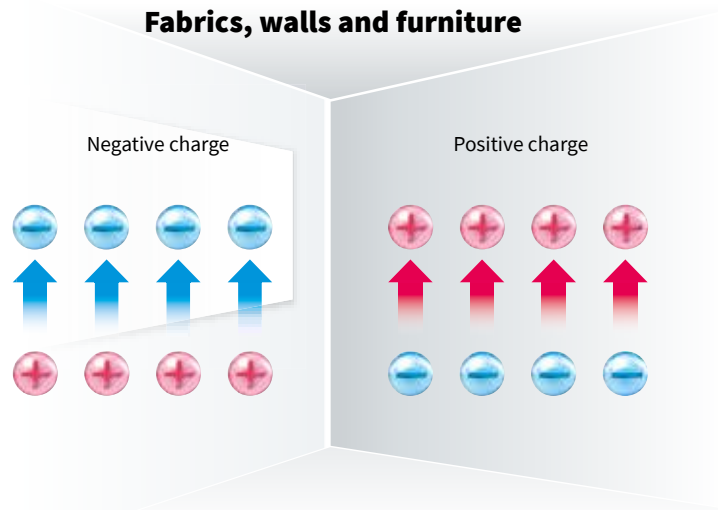
- Timer (4 / 8h)
- Filter exchange indicator

Rounded shape, reliable even if young children are present at home.

1

REMOVAL

Plasmacluster Ions eliminate static electricity. There are two types of electrostatic charges: positive and negative. Negative ions can only reduce a positive charge.

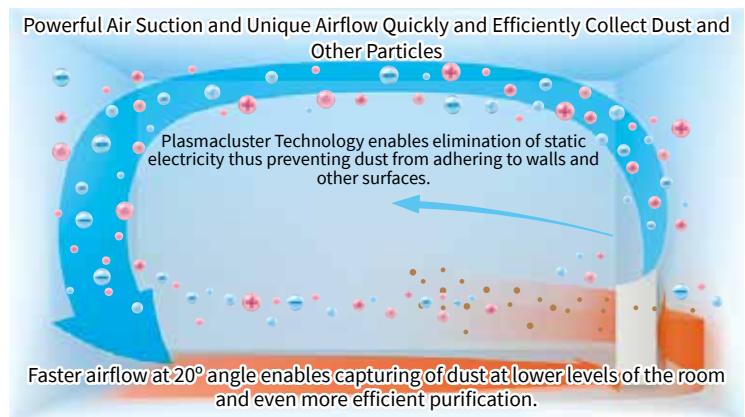


Positively- and negatively-charged Plasmacluster Ions reduce both positive and negative static electricity.

2

COLLECTION

Powerful Air Suction and Unique Airflow Quickly and Efficiently Collect Dust and Other Particles



3

CAPTURE

High-Performance Filters Capture Airborne Dust Particles

Removal of Micron-Size Dust Particles Including 0.3-Micron Viruses and Dust Allergens

Dust-capturing HEPA filter



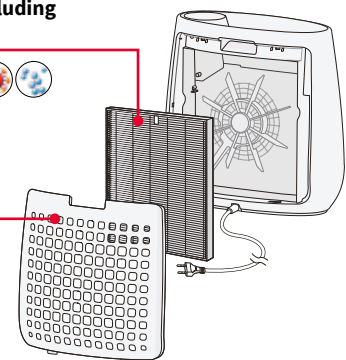
No need to replace for 2 years*

*When smoking five cigarettes a day

Collecting microscopic dust particles

Micron-Mesh Pre-filter on Rear Panel

No need to replace
Easy maintenance: just wipe,
without disconnecting.



IG-GC2EU

PORTABLE PLASMACLUSTER ION



Ensure comfort in your personal space



Model	IG-GC2EU
Color	B (black), P (pink), N (gold champagne)
Connection type	Car adapter
Input power	DC 12 V
Output power	DC 5 V (max. 2 A for 2 ports)
Plug type	Cigar socket / USB
Operation modes	3 modes: Turbo (strong) / Med (medium) / Low (weak)
Power Consumption AC	1.8 W/0.7 W/0.5 W
Ion density (approx.)	75 000/25 000/7 000 ions/cm ³
Noise Level	36 dB/23 dB/19 dB
Filter	2 filters (right & left) / catching up to PM10
Dimensions	diameter at the top: 74 mm / diameter at the bottom: 65 mm / height: 162 mm
Weight	approx. 265 g (with no accessories)
Capacity appropriate for Plasmacluster with high ion concentration 25,000**	approx. 3.6 m ³

*1 Cigar plug adaptor with 2 USB ports included, enabling simultaneous charge of a smart-phone

** This is an indicator of concentration of ions, measured near the center of the room (0.5 m above floor), when ion generator is placed at the right spot e.g. in the cup holder next to driver's seat and is set to „MED“ mode.



Fine dust and particulate matter - filtration



PM10 filter blocks fine dust and particulate matter
Thanks to PM10 dust filter, the device captures approx. 80% of particulate matter and specks of dust (10 microns or larger).

Portable device



Connect ion generator to the power bank and position it anywhere.



Quick refreshing



Car AC mold odor



Cigarette and food odors



Eliminates mold odor

Tested by Sharp
• Method: Effectiveness of refreshing a cloth sample impregnated with unpleasant mold odor and exposed to Plasmacluster ions has been evaluated via a couple-testing method in the car space of approx. 3.6 m³.*

* Effectiveness of refreshing may vary depending on type, durability of used material and other factors connected with odor.



Mite



Viruses



Bacteria



Mold



Odours



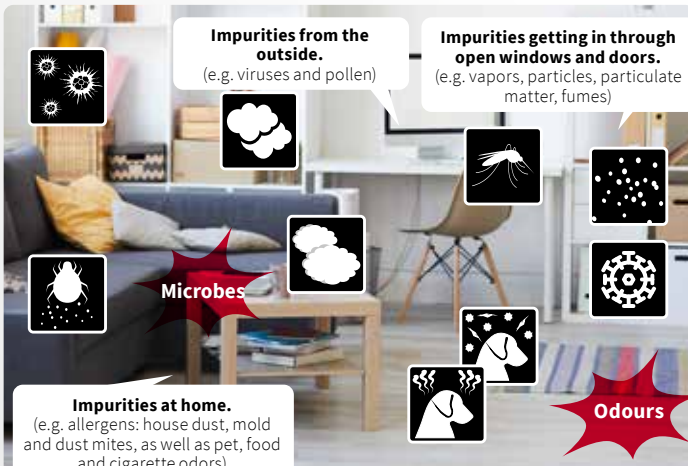
Static electricity



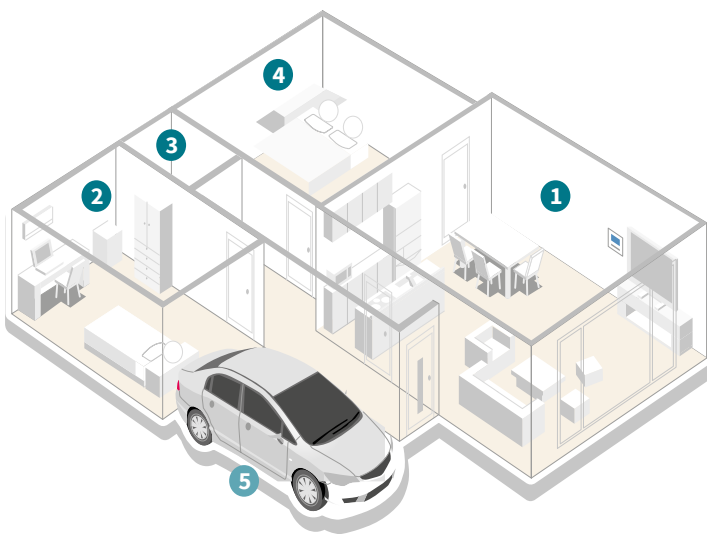
Facial care

A WIDE RANGE OF APPLICATIONS OF SHARP PRODUCTS WITH PLASMACLUSTER ION GENERATOR

1. LIVING ROOMS / LARGE ROOMS



Among all the rooms in the house, the living room is most frequently used. Many invisible impurities float in the air, such as viruses or dust attacking from the outside, as well as various odors and dust mite feces coming from inside.



	Car air conditioner		Pet hair
	Mosquitoes		Bacteria
	House dust		Viruses
	Mold and germs		Body odor
	Pollen		Cigarette odor
	Mite		Pet odor
			Food odors

2. SMALL ROOMS



As children's immune system is weaker than adults' immune system, it is extremely important to provide them with clean air. Apart from visible impurities such as dust and pet hair, other impurities such as viruses and dust mites are hidden.

3. WARDROBES



Lack of proper ventilation in wardrobes and walk-in closets may favor the development of mold. Moreover, when clothes are stored in a small space sweat odor may linger.

4. BEDROOMS



We spend over one-fourth of the day in bed. Sweat odor in the air, acrid allergens and even dust mite feces make comfortable and healthy sleep impossible.

5. CARS



As air inside the car is motionless, food or cigarette odors easily cling to the inside of the car. Mold odor coming from car's AC system makes driving uncomfortable.

Model		KI-G75EU
Color		W (white)
Recommended area	Air purifying ¹ [m ²]	56
Humidifying system	Humidifying system	Natural vaporization
	Tank capacity	4.0
	Humidifying capacity ² [ml/h]	750
PCI density (ions/cm ³)		25000
Airflow (Max / Med / Low)	Without humidifying [m ³ /h]	450/ 258/ 90
	With humidifying [m ³ /h]	378/ 258/ 90
Noise Level (Max / Med / Low)	Without humidifying [dB(A)]	52/42/18
	With humidifying [dB(A)]	49/42/20
Special program mode	Plasmacluster Ion ON/OFF	Yes
	Plasmacluster Ion Spot	Yes (Swing)
	Patrolling Function	-
	Intelligent Auto Operation	Yes
	Auto operation	Yes
	Clean Ion Shower Mode	Yes
	Clean Air mode	Yes
	Clean Air Humidify mode (ON/OFF)	Yes
	Clean Assist mode	Yes
	Pre-Filter Clean mode	Yes
Fan Operation modes	Auto / Pollen / Sleep / Low / Med / Max	
20° Airflow Angle		Yes
Auto restart* ³		Yes
Child lock* ⁴		Yes
Timer		On/Off (1 - 12 h)
Clean sign indicator		Yes
Light control button		Yes
Filter type (lifetime)	Dust collection	HEPA* ⁵ (Up to 10 years* ⁶)
	Deodorization	Yes (Up to 10 years* ⁶)
	Pre-filter	Yes
	Humidifying	Yes (Up to 10 years* ⁶)
Sensor	Odour	Yes
	Dust	Yes
	Temperature & humidity	Yes
	Light	Yes
	Motion	-
Replacement filter	HEPA	FZ-G75HFE
	Deodorizing	FZ-G60DFE
	Humidifying filter	FZ-AX6MFE
	PCI unit	IZ-C75SE (lifetime: 17,500 hours)
Voltage/frequency [V,Hz]		220-240/50-60
Power input (Max / Med / Low)	Without humidifying	80/26/7.0
	With humidifying (W)	55/28/7.0
Standby power (W)		0.9
Inverter operation		Yes
Power cord length [m]		2.0
Dimensions (W x H x D) [mm]		405 × 666 × 316
Net weight [kg]		12

Design and specifications are current as of July 2022, but are subject to change without prior notice.
Actual colors may differ slightly from the colors shown in this brochure.

Model		KC-G60EU	KC-G50EU	KC-G40EU
Color		W (white)	W (white), H (charcoal gray)	W (white), H (charcoal gray)
Recommended area	Air purifying ¹ [m ²]	~50	~38	~28
Humidifying system	Humidifying system	Natural vaporization	Natural vaporization	Natural vaporization
	Tank capacity	3.0	2.5	2.5
	Humidifying capacity ² [ml/h]	630	450	400
PCI density (ions/cm ³)		7000	7000	7000
Airflow (Max / Med / Low)	Without humidifying [m ³ /h]	408/240/72	306/180/60	240/120/60
	With humidifying [m ³ /h]	342/240/72	240/120/60	210/120/60
Noise Level (Max / Med / Low)	Without humidifying [dB(A)]	53/48/24	52/47/19	46/40/19
	With humidifying [dB(A)]	49/48/24	46/40/20	43/40/20
Special program mode	Plasmacluster Ion ON/OFF	Yes	Yes	Yes
	Plasmacluster Ion Spot	Yes	Yes	Yes
	Patrolling Function	Yes	Yes	Yes
	Intelligent Auto Operation	Yes	Yes	-
	Auto operation	-	-	Yes
	Clean Ion Shower Mode	Yes	Yes	Yes
	Clean Air mode	Yes	Yes	Yes
	Clean Air Humidify mode (ON/OFF)	Yes	Yes	Yes
	Clean Assist mode	-	-	-
	Pre-Filter Clean mode	-	-	-
Fan Operation modes	Pollen / Sleep / Low / Med / Max	Pollen / Sleep / Low / Med / Max	Pollen / Sleep / Low / Med / Max	
20° Airflow Angle		Yes	Yes	Yes
Auto restart ³		Yes	Yes	Yes
Child lock ⁴		Yes	Yes	Yes
Timer		On/Off	On/Off	On/Off
Clean sign indicator		Yes (7 steps)	Yes (7 steps)	Yes (7 steps)
Light control button		Yes (bright / dim / off)	Yes (bright / dim / off)	Yes (bright / dim / off)
Filter type (lifetime)	Dust collection	HEPA ⁵ (Up to 10 years ⁶)	HEPA ⁵ (Up to 10 years ⁶)	HEPA ⁵ (Up to 10 years ⁶)
	Deodorization	Double deodorization (Up to 10 years ⁶)	Double deodorization (Up to 10 years ⁶)	Double deodorization (Up to 10 years ⁶)
	Pre-filter	Fine-meshed	Fine-meshed	Fine-meshed
	Humidifying	Yes (Up to 10 years ⁶)	Yes (Up to 10 years ⁶)	Yes (Up to 10 years ⁶)
Sensor	Odour	Yes	Yes	-
	Dust	Yes	Yes	Yes
	Temperature & humidity	Yes	Yes	Yes
	Light	Yes	Yes	Yes
	Motion	Yes	Yes	-
Replacement filter	HEPA	FZ-D60HFE	FZ-D40HFE	FZ-D40HFE
	Deodorizing	FZ-G60DFE	FZ-G40DFE	FZ-G40DFE
	Humidifying filter	FZ-G60MFE	FZ-G60MFE	FZ-G60MFE
	PCI unit	-	-	-
Voltage/frequency [V,Hz]		220-240/50-60	220-240/50-60	220-240/50-60
Power input (Max / Med / Low)	Without humidifying	72/38/5.0	53/26/5.0	31/12/5.0
	With humidifying (W)	55/40/6.5	33/14/6.5	24/14/6.5
Standby power (W)		1.2	1.2	1.2
Inverter operation		Yes	Yes	Yes
Power cord length [m]		2.0	2.0	2.0
Dimensions (W x H x D) [mm]		370 x 660 x 293	345 x 631 x 262	345 x 631 x 262
Net weight [kg]		10.5	9.2	9.2

¹ Recommended area: Calculated based on the JEM1467 standard of the Japan Electrical Manufacturers' Association. ² Measurement conditions: 20°C, 30% humidity (JEM1426) ³ The air purifier automatically resumes operation when power returns, even after a sudden power interruption, such as due to a circuit breaker. ⁴ By pressing the Child Lock button for more than three seconds, the operation buttons are locked to help prevent inadvertent operation by children or pets. ⁵ HEPA is defined by the JEM1467 standard of the Japan Electrical Manufacturers' Association Standard. The filter removes more than 99.97% of 0.3-micron dust particles. ⁶ At a smoking rate of five cigarettes per day.

• The filter itself may produce an odor and need to be replaced after several months if the air purifier is used to reduce strong odors, such as cigarette smoke or grilled meat. • Use the air purifier in combination with room ventilation if it is used for strong odors. • Not all harmful substances in cigarette smoke (e.g., carbon monoxide) can be removed. • Not all commonly occurring odors (e.g., pet odors) can be removed. • Heat from air drawn in is lost when water evaporates from the humidifier filter, so the temperature of the outgoing airflow is lower than the room temperature. • Use tap water to fill the water tank.

Model		KC-D60EU	KC-D50EU	KC-D40EU
Color		W (white)	W (white) H (charcoal gray)	W (white) B (black) H (charcoal gray)
Recommended area	Air purifying ¹ [m ²]	~48	~38	~26
Humidifying system	Humidifying system	Natural vaporization	Natural vaporization	Natural vaporization
	Tank capacity	3.0	2.5	2.5
	Humidifying capacity ² [ml/h]	660	600	440
PCI density (ions/cm ³)		7000	7000	7000
Airflow (Max / Med / Low)	Without humidifying [m ³ /h]	396/240/90	306/186/60	216/144/60
	With humidifying [m ³ /h]	366/240/90	288/186/60	180/144/60
Noise Level (Max / Med / Low)	Without humidifying [dB(A)]	55/45/25	55/43/23	47/37/23
	With humidifying [dB(A)]	54/45/25	54/43/23	43/37/23
Special program mode	Plasmacluster Ion ON/OFF	Yes	Yes	Yes
	Plasmacluster Ion Spot	-	-	-
	Patrolling Function	-	-	-
	Intelligent Auto Operation	-	-	-
	Auto operation	Yes	Yes	Yes
	Clean Ion Shower Mode	Yes	Yes	Yes
	Clean Air mode	Yes	Yes	Yes
	Clean Air Humidify mode (ON/OFF)	Yes	Yes	Yes
	Clean Assist mode	-	-	-
	Pre-Filter Clean mode	-	-	-
	Fan Operation modes	Auto / Advanced Auto / Pollen / Low / Med / Max	Auto / Advanced Auto / Pollen / Low / Med / Max	Auto / Advanced Auto / Pollen / Low / Med / Max
20° Airflow Angle		Yes	Yes	Yes
Auto restart ^{*3}		Yes	Yes	Yes
Child lock ^{*4}		Yes	Yes	Yes
Timer		On/Off	On/Off	On/Off
Clean sign indicator		Yes (5 steps)	Yes (5 steps)	Yes (5 steps)
Light control button		Yes (bright / dim / off)	Yes (bright / dim / off)	Yes (bright / dim / off)
Filter type (lifetime)	Dust collection	HEPA ^{*5} (Up to 10 years ^{*6})	HEPA ^{*5} (Up to 10 years ^{*6})	HEPA ^{*5} (Up to 10 years ^{*6})
	Deodorization	Yes (Up to 10 years ^{*6})	Yes (Up to 10 years ^{*6})	Yes (Up to 10 years ^{*6})
	Pre-filter	Yes	Yes	Yes
	Humidifying	Yes (Up to 10 years ^{*6})	Yes (Up to 10 years ^{*6})	Yes (Up to 10 years ^{*6})
Sensor	Odour	Yes	Yes	-
	Dust	Yes	Yes	Yes
	Temperature & humidity	Yes	Yes	Yes
	Light	-	-	-
	Motion	-	-	-
Replacement filter	HEPA	FZ-D60HFE	FZ-D40HFE	FZ-D40HFE
	Deodorizing	FZ-D60DFE	FZ-D40DFE	FZ-D40DFE
	Humidifying filter	FZ-A61MFR	FZ-A61MFR	FZ-A61MFR
	PCI unit	-	-	-
Voltage/frequency [V,Hz]		220-240/50-60	220-240/50-60	220-240/50-60
Power input (Max / Med / Low)	Without humidifying	80/24/5.5	54/17/5.0	25/12/5.0
	With humidifying (W)	70/26/7.0	49/20/7.0	19/14/7.0
Standby power (W)		0.9	0.9	0.9
Inverter operation		Yes	Yes	Yes
Power cord length [m]		2.0	2.0	2.0
Dimensions (W x H x D) [mm]		420 x 637 x 242	399 x 615 x 230	399 x 615 x 230
Net weight [kg]		8.6	7.9	7.9

Design and specifications are current as of July 2022, but are subject to change without prior notice.
Actual colors may differ slightly from the colors shown in this brochure.

KC-A60EU	KC-A50EU	KC-A40EU	KC-F32EU
W (white)	W (white) B (black)	W (white) B (black)	W (white)
~48	~38	~26	~21
Natural vaporization	Natural vaporization	Natural vaporization	Natural vaporization
4.0	3.6	3.0	1.8
730	600	450	350
7000	7000	7000	7000
396/270/84	306/216/60	216/168/48	180/125/52
366/270/120	288/216/90	180/144/60	180/125/52
49/40/19	49/41/16	46/40/16	48/38/21
47/40/24	47/41/23	42/35/20	48/38/21
Yes	Yes	Yes	Yes
-	-	-	-
-	-	-	-
-	-	-	-
Yes	Yes	Yes	Yes
Yes	Yes	Yes	Yes
Yes	Yes	Yes	-
Yes	Yes	Yes	-
-	-	-	-
-	-	-	-
Auto / Pollen / Low / Med / Max	Auto / Pollen / Low / Med / Max	Auto / Pollen / Low / Med / Max	Auto / Sleep / Med / Max
-	-	-	Yes
Yes	Yes	Yes	Yes
Yes	Yes	Yes	-
-	-	-	Off
Yes (5 steps)	Yes (5 steps)	Yes (5 steps)	Yes (3 steps)
Yes (bright / dim / off)	Yes (bright / dim / off)	Yes (bright / dim / off)	Yes (bright / off)
HEPA*5 (Up to 10 years*6)	HEPA*5 (Up to 10 years*6)	HEPA*5 (Up to 10 years*6)	HEPA*5 (Up to 10 years*6)
Yes (Up to 10 years*6)	Yes (Up to 10 years*6)	Yes (Up to 10 years*6)	Yes (Up to 2 years*6)
Yes	Yes	Yes	Yes
Yes (Up to 10 years*6)	Yes (Up to 10 years*6)	Yes (Up to 10 years*6)	Yes (Up to 5 years*6)
Yes	Yes	-	-
Yes	Yes	Yes	Yes
Yes	Yes	Yes	Yes
-	-	-	-
-	-	-	-
FZ-A61HFR	FZ-A51HFR	FZ-A41HFR	FZ-FH30HFE
FZ-A61DFR	FZ-A51DFR	FZ-A41DFR	FZ-FH30DFE
FZ-A61MFR	FZ-A61MFR	FZ-A61MFR	FZ-F30MFE
-	-	-	-
220-240/50-60	220-240/50-60	220-240/50-60	220-240/50-60
60/22/5.3	42/18/4.3	25/15/4.0	27/12/4.1
44/24/9.0	36/20/7.4	19/13/6.8	27/12/4.1
0.9	0.9	0.9	0.9
Yes	Yes	Yes	Yes
2.0	2.0	2.0	2.0
416 x 643 x 295	399 x 603 x 273	382 x 570 x 242	380 x 570 x 197
11.0	9.2	8.1	7.2

* Recommended area: Calculated based on the JEM1467 standard of the Japan Electrical Manufacturers' Association. ** Measurement conditions: 20°C, 30% humidity (JEM1426) ** The air purifier automatically resumes operation when power returns, even after a sudden power interruption, such as due to a circuit breaker. ** By pressing the Child Lock button for more than three seconds, the operation buttons are locked to help prevent inadvertent operation by children or pets. ** HEPA is defined by the JEM1467 standard of the Japan Electrical Manufacturers' Association Standard. The filter removes more than 99.97% of 0.3-micron dust particles. ** At a smoking rate of five cigarettes per day.

• The filter itself may produce an odor and need to be replaced after several months if the air purifier is used to reduce strong odors, such as cigarette smoke or grilled meat. • Use the air purifier in combination with room ventilation if it is used for strong odors. • Not all harmful substances in cigarette smoke (e.g., carbon monoxide) can be removed. • Not all commonly occurring odors (e.g., pet odors) can be removed. • Heat from air drawn in is lost when water evaporates from the humidifier filter, so the temperature of the outgoing airflow is lower than the room temperature. • Use tap water to fill the water tank.

Model		FP-J80EU	FP-J60EU	FP-J40EU	FP-J30EU
Color		W (white) H (charcoal gray)	W (white) H (charcoal gray)	W (white)	B (black) P (pink) A (blue)
Recommended area	Air purifying ¹ [m ²]	62	48	30	23
	Humidifying system	-	-	-	-
Humidifying system	Tank capacity	-	-	-	-
	Humidifying capacity ² [ml/h]	-	-	-	-
PCI density (ions/cm ³)		25000	25000	7000	7000
Airflow (Max / Med / Low)	Without humidifying [m ³ /h]	480/288/60	396/222/60	240/186/48-120	180/120/60
	With humidifying [m ³ /h]	-	-	-	-
Noise Level (Max / Med / Low)	Without humidifying [dB(A)]	47/45/15	43/40/15	45/39/15-30	44/36/23
	With humidifying [dB(A)]	-	-	-	-
	Plasmacluster Ion ON/OFF	Yes	Yes	Yes	Yes
	Plasmacluster Ion Spot	Yes	Yes	-	-
	Patrolling Function	-	-	-	-
	Intelligent Auto Operation	-	-	-	-
	Auto operation	Yes	Yes	Yes	Yes
Special program mode	Clean Ion Shower Mode	Yes	Yes	Yes	Yes
	Clean Air mode	Yes	Yes	Yes	Yes
	Clean Air Humidify mode (ON/OFF)	Yes	Yes	Yes	Yes
	Clean Assist mode	-	-	-	-
	Pre-Filter Clean mode	-	-	-	-
	Fan Operation modes	Max / Med / Low / Pollen / Sleep	Max / Med / Low / Pollen / Sleep	Max / Med / Sleep	Max / Med / Sleep
20° Airflow Angle		Yes	Yes	Yes	Yes
Auto restart ³		Yes	Yes	Yes	Yes
Child lock ⁴		Yes	Yes	-	-
Timer		On/Off: 1/2/3/12h	On/Off: 1/2/3/12h	Off: 2/4/8h	Off: 4/8h
Clean sign indicator		Yes	Yes	Yes	-
Light control button		Yes (bright/dim/off)	Yes (bright/dim/off)	Yes (bright/dim/off)	-
	Dust collection	HEPA ⁵ (Up to 10 years ⁶)	HEPA ⁵ (Up to 10 years ⁶)	HEPA ⁵ (Up to 10 years ⁶)	HEPA ⁵ (Up to 10 years ⁶)
Filter type (lifetime)	Deodorization	Yes (Up to 10 years ⁶)	Yes (Up to 10 years ⁶)	Yes (Up to 10 years ⁶)	Yes (Up to 2 years ⁶)
	Pre-filter	Yes	Yes	Yes	Yes
	Humidifying	-	-	-	-
	Odour	Yes	Yes	Yes	-
Sensor	Dust	Yes (High Sensitive)	Yes (High Sensitive)	Yes	-
	Temperature & humidity	Yes	-	-	-
	Light	Yes	Yes	Yes	-
	Motion	-	-	-	-
	HEPA	FZ-J80HFX	FZ-J80HFX	FZ-J40HFX	FZ-F30HFE
Replacement filter	Deodorizing	FZ-J80DFX	FZ-J80DFX	FZ-J40DFX	FZ-F30DFE
	Humidifying filter	-	-	-	-
	PCI unit	IZ-C90MEU (lifetime: 17,500 hours)	IZ-C90MEU (lifetime: 17,500 hours)	-	-
Voltage/frequency [V,Hz]		220-240/50-60	220-240/50-60	220-240/50-60	220-240/50-60
Power input (Max / Med / Low)	Without humidifying	48/28/4.0	38/18/3.6	23/14/3.5-7.5	50/30/13
	With humidifying (W)	-	-	-	-
Standby power (W)		1.3	1.2	0.9	0.6
Inverter operation		Yes	Yes	Yes	-
Power cord length [m]		2.0	2.0	2.0	2.0
Dimensions (W x H x D) [mm]		416 x 728 x 291	416 x 728 x 291	390 x 583 x 270	431 x 411 x 211
Net weight [kg]		10.6	10.0	6.2	4.0

Design and specifications are current as of July 2022, but are subject to change without prior notice.
Actual colors may differ slightly from the colors shown in this brochure.

¹ Recommended area: Calculated based on the JEM1467 standard of the Japan Electrical Manufacturers' Association. ² Measurement conditions: 20°C, 30% humidity (JEM1426) ³ The air purifier automatically resumes operation when power returns, even after a sudden power interruption, such as due to a circuit breaker. ⁴ By pressing the Child Lock button for more than three seconds, the operation buttons are locked to help prevent inadvertent operation by children or pets. ⁵ HEPA is defined by the JEM1467 standard of the Japan Electrical Manufacturers' Association Standard. The filter removes more than 99.97% of 0.3-micron dust particles. ⁶ At a smoking rate of five cigarettes per day.

• The filter itself may produce an odor and need to be replaced after several months if the air purifier is used to reduce strong odors, such as cigarette smoke or grilled meat. • Use the air purifier in combination with room ventilation if it is used for strong odors. • Not all harmful substances in cigarette smoke (e.g., carbon monoxide) can be removed. • Not all commonly occurring odors (e.g., pet odors) can be removed. • Heat from air drawn in is lost when water evaporates from the humidifier filter, so the temperature of the outgoing airflow is lower than the room temperature. • Use tap water to fill the water tank.

EAN CODES

Main Product	EAN code
KI-G75EU-W	4974019121185
KC-G60EU-W	4974019934990
KC-G50EU-W	4974019934969
KC-G50EU-H	4974019116419
KC-G40EU-W	4974019934952
KC-G40EU-H	4974019934945
KC-D60EU-W	4974019914039
KC-D50EU-W	4974019914046
KC-D40EU-W	4974019915012
KC-D40EU-B	4974019914053
KC-D40EU-H	4974019116402
KC-A60EU-W	4974019764672
KC-A50EU-W	4974019764689
KC-A50EU-B	4974019140810

Main Product	EAN code
KC-A40EU-W	4974019764696
KC-A40EU-B	4974019140803
KC-F32EU-W	4974019928807
FP-J80EU-W	4974019152431
FP-J80EU-H	4974019203201
FP-J60EU-W	4974019152424
FP-J60EU-H	4974019203195
FP-J40EU-W	4974019152417
FP-J30EU-B	4974019152448
FP-J30EU-A	4974019152400
FP-J30EU-P	4974019152394
IG-GC2EU-B	4974019153889
IG-GC2EU-N	4974019153902
IG-GC2EU-P	4974019153957

