

Full-size(Built-in)

QW-NI13I49EX-DE



Highligths

- 13 Place Settings
- 2 Racks
- 4 Programmes
- E Energy Efficiency
- Integrated 60cm
- Active Drying
- 12 L Water Consumption

SHARP
Be Original.



Leaks happen but with the Aquastop you have the peace of mind that if a leak is detected the water supply is shut off to protect you and your home.



Program your dishwasher so that it starts at a time that suits you.



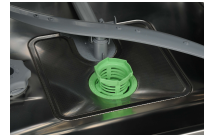
For those times when you only have half a load but need it done the Eco Wash allows you to select either the top or bottom half of the machine to be cleaned.



When time is of the essence this program does the dishes in 50 minutes at 60°C.



When you have to fit every dish, glass, fork and pot into one load these machines can cater to even the largest of families or dinner parties.



An anti-bacterial system added to the filter kills 99% of bacteria in the wash. Take that germs.

More Features

SHARP
Be Original.

Key Features

Energy Efficiency	E
Quick Wash Duration (mins)	N/A
Number of Programmes	4
Cleaning Performance	A
Drying Performance	A
Number of Place Settings	13
Number of racks	2
Dishwasher Type	Integrated 60cm
WaterBlade & AquaGlide	N/A
Drying System	Active
Water Consumption (L)	12

Other features

Water Inlet	Cold
Extra Hygiene Option	N/A
Extra Silent Option	N/A
Extra Fast Option	N/A
IntelliWash	N/A
Built-in Appliance	Yes

Noise Level (dB(A) re1 pW)	49
Advanced Inverter Motor	N/A
Graphic Displays	N/A
AutoDoor	N/A
EcoBox	N/A
MicroBan	Yes
Height Adjustable Upper Basket	Yes
Number of Mug Shelves	4 Adjustable Mugshelves
Foldable Racks on Upper Basket	N/A
Foldable Racks on Lower Basket	Yes
Child Lock	N/A
Express 50	Yes
Thirty Minute Wash	N/A
Delay Timer	Yes
Super Quiet	N/A
Interior LED Lighting	N/A
Overflow and Leakage Protection	Yes
EasyTray	N/A
Extra Dry Option	N/A
Half Load Option	Yes

Number of Spray Arms	2
Washing Cycle Indicator	N/A
Adjustable Feet	Yes
Rinse-Aid Indicator	Yes
Salt Indicator	Yes
Removable Cutlery Basket	Yes
HygieneWash	N/A
DualProWash	N/A
Aquastop	Yes
EcoWash	Yes

Dimensions and Weight

Unpacked Dimensions (HxWxD) (mm)	82,0x59,8x55,0
Packed Dimensions (shrink) (HxWxD) (mm)	85,1x64,4x66,1
Product Weight Unboxed (net)(kg)	38
Product Weight Boxed (gross)(kg)	40

Programmes

Programme 1	Prewash
Programme 2	Eco 50°C

Programme 3	Express 50'
Programme 4	Intensive 65°C

Code EAN

EAN Code	4974019187082
----------	---------------

Power, consumption, and voltage

Electrical Current (A)	10
Voltage / Frequency (V) / (Hz)	220-240 / 50
Annual Energy Consumption (Kwh)	261
Annual Water Consumption (L)	3360

Power, Consumption&Voltage

Water Consumption (L)	12
-----------------------	----